



8/4 Flaxmill Place
Edinburgh
EH6 5QW



1



2



2



1st Floor Flat



accommodation

- Entrance hall
- Sitting room / dining room
- Fitted kitchen
- Master bedroom
- En suite shower room
- Second double bedroom
- Bathroom

features

- Gas central heating
- Double glazing
- Securty entryphone system
- Bike store
- Residents parking

The development is managed by Ross & Liddle and a payment of approx. £82 per month is payable

description

Beautifully presented first floor flat in a quiet, modern development with residents parking and communal gardens. The accommodation comprises entrance hall with large storage cupboard, sitting room / dining room with French doors to a Juliet balcony, fitted kitchen, master bedroom with fitted wardrobes and en suite shower room, second double bedroom and bathroom. The property benefits from lift access, gas central heating, double glazing and a security entry phone. There are well maintained communal gardens to the rear. Overall, this is a delightful apartment, offered for sale in move in condition which must be viewed to be fully appreciated.



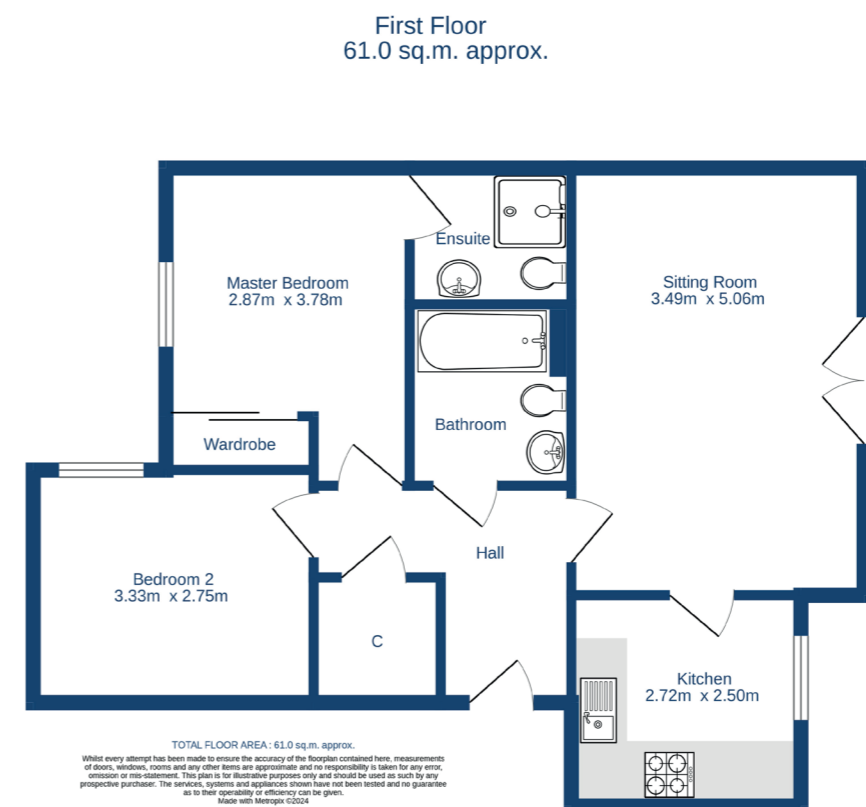
EPC:
B



Home Report
Value: £240000

Items to be included in the sale price:

Fitted flooring, ceiling light fittings, curtains and kitchen appliances. Other items of furniture may be available by separate negotiation.



espc **espc** CHARTERED FIRM

cameron stephen & co.
14 constitution street,
edinburgh eh6 7bt
tel: 0131 555 1234 or 07483 361731
property@cameronstephen.co.uk
www.cameronstephen.co.uk
DX 550871 leith