





Welcome home to coastal bliss...

If you're looking for a life of coastal bliss, a weekend escape, or simply your next family home, our carefully selected 3, 4 & 5 bedroom homes at Inchcolm Green, are designed to suit every lifestyle.

Set within picturesque Aberdour on Fife's sought-after coastline, these beautiful family homes really are the epitome of aspirational living.

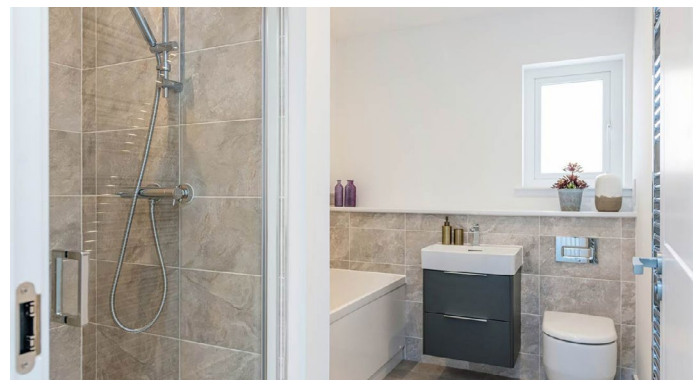
- Minutes to Silver Sands beach
- Excellent transport links inc. Aberdour train station
- Eateries, local shops plus good schooling nearby
- High specification included as standard
- Energy efficient – all homes have an A-rated EPC
- A life of coastal bliss awaits

This spacious 4 bedroom semi-detached home features:

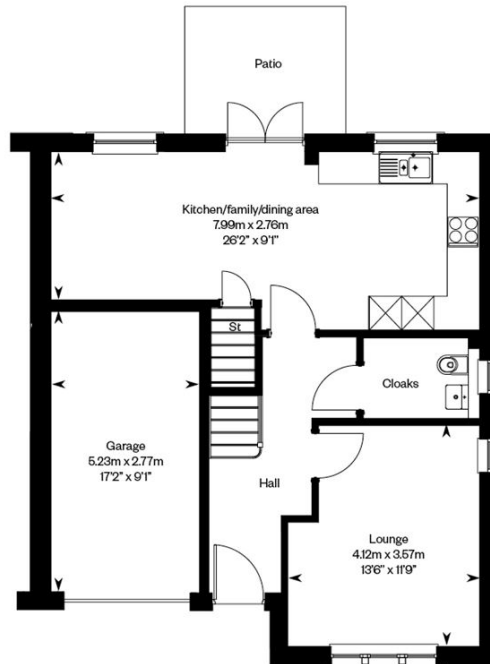
- French doors leading to the patio area and rear garden
- Integrated kitchen appliances included as standard
- Fitted wardrobes to all bedrooms
- Excellent storage throughout
- An integral single garage and driveway
- Overall Size of 1,322 Sq. Ft.
- PEA Rating: A

Take a virtual tour

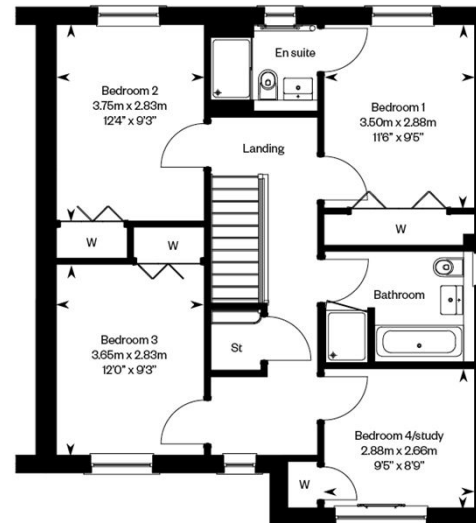
<https://my.matterport.com/show/?m=VyRQX4Z8yFJ&wts=3&ts=1.4>



GROUND FLOOR



FIRST FLOOR



First floor

GILSONGRAY.CO.UK

EDINBURGH

29 Rutland Square
EH1 2BW
0131 516 5366

...

GLASGOW

160 West George Street
G2 2HQ
0141 530 2021

...

EAST LOTHIAN

33 Westgate
EH39 4AG
01620 893 481

...

DUNDEE

11 South Tay Street
DD1 1NU
01382 201 000

...

BORDERS

01890 880 008

 @gilsongrayprop  gilson gray property  gilson gray property  @gilsongrayprop



rightmove  Zoopla.co.uk  OnTheMarket

These particulars were prepared on the basis of our own knowledge of the local area and, in respect of the property itself, information supplied to us by our clients; all reasonable steps were taken at the time of preparing these particulars to ensure that all details contained in them were accurate. All statements contained in the particulars are for information only and all parties should not rely upon them as statements or representations of fact. In particular, (a) descriptions, measurements and dimensions, which may be quoted in these particulars are approximate only and (b) all references to conditions, planning permission, services, usage, constructions, fixtures and fittings and movable items contained in the property are for guidance only. Our clients may instruct us to set a closing date for offers at short notice and therefore if you wish to pursue interest in this property, you should immediately instruct your solicitor to note interest with us. Our clients reserve the right to conclude a bargain for the sale of the above subjects or any part thereof ahead of a notified closing date and will not be obliged to accept either the highest or indeed any offer for the above subjects or any part thereof. All measurements have been taken using a sonic tape and cannot be regarded as guaranteed given the limitations of the device. Services and/or appliances referred to in these particulars have not been tested and no warranty is given that they are in full working order.