

6 Symington Street, Leadhills, ML12 6YE

Offers Around £90,000



End terraced three bedroom house situated in the village of Leadhills with spectacular views over surrounding Countryside. Benefits from central heating, double glazing, gardens and off street parking. Leadhills is former Lead Mining Village situated in the Lowther Hills. Approximately 6 miles from the M74 Glasgow – Carlisle motorway



POLLOCK & MCLEAN
SOLICITORS FOR YOU AND YOUR FAMILY



Pollock & McLean
41 Castle Street
Dumfries
DG1 1DU
01387 255414

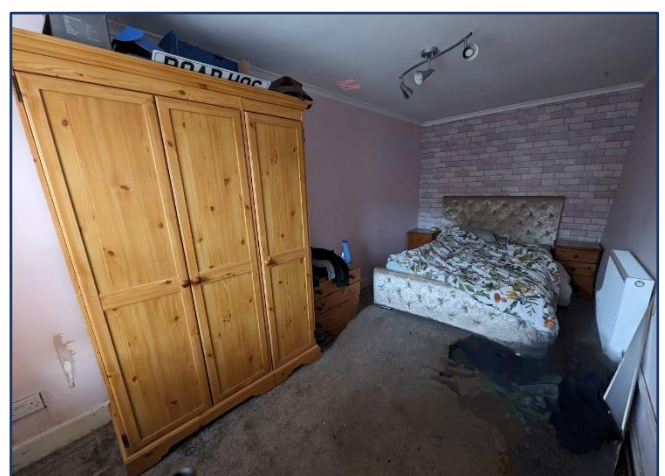
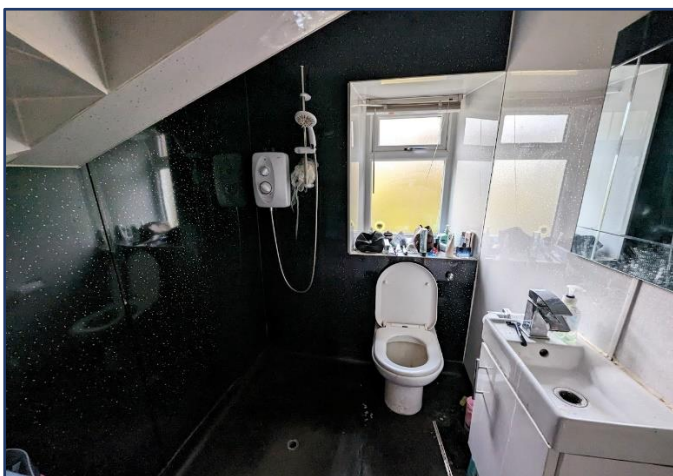


Measurements (all approx.)

Entrance Porch – 1.09m x 0.82m
Bedroom 1 – 4.88m x 2.34m
Bedroom 3 – 3.31m x 2.51m

Living Room – 4.79m x 2.87m
Shower Room – 2.09m x 2.04m

Kitchen/Dining Room – 4.87m x 3.69m
Bedroom 2 – 3.13m x 2.91m



These particulars have been carefully prepared by Messrs Pollock & McLean, Solicitors and Estate Agents. Although believed to be correct they are not guaranteed and therefore prospective purchasers should satisfy themselves as to the basic facts before submitting an offer. All photographs have been taken using a wide angled lens.



Accommodation comprises:

- Entrance porch with door leading to hallway.
- Entrance hall with doors to living room, wet room, bedroom and stairs to first floor.
- Living room with wood burning stove with tiled hearth and wooden mantle, clothes pulley and window to front.
- Kitchen/dining room with fitted wall and base units, sink with vegetable preparation mixer tap and left hand drainer. Alpha boiler. Windows to side and front. Door leading to front vestibule with front door. Open stairs leading up to loft,
- Bedroom which is a double with window to the front.
- Wet room with shower, W. C., wash hand basin with mixer tap and under storage, fully Respatex. Window to rear and heated towel rail.
- Stairs to first floor with hand rail and banister. Velux window to front, doors to two bedrooms. Two doors to eaves.
- Two single bedrooms with Velux windows to front.
- Good size garden with stairs leading up to it. Shed, wood store and space to park three cars.

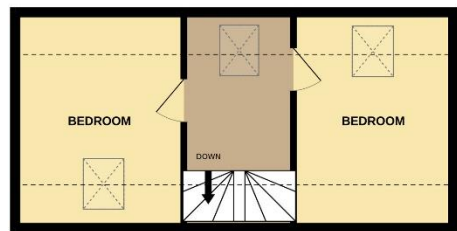




GROUND FLOOR



1ST FLOOR



Whilst every attempt has been made to ensure the accuracy of the floorplan contained here, measurements of doors, windows, rooms and any other items are approximate and no responsibility is taken for any error, omission or mis-statement. This plan is for illustrative purposes only and should be used as such by any prospective purchaser. The services, systems and appliances shown have not been tested and no guarantee as to their operability or efficiency can be given.
Made with Metropix 6/2024