



# Restalrig

20/3 Restalrig Circus  
EH7 6HL



1



2



EPC Rating

## Upper Flat

OFFERS OVER £120,000

- Livingroom
- Kitchen
- 2 bedrooms
- Bathroom
- Gas central heating
- Double glazing
- Private garden
- Communal drying area
- Ideal for a first-time buyer or investor

Viewing - by appointment call  
Solicitors on 0131 554 6321

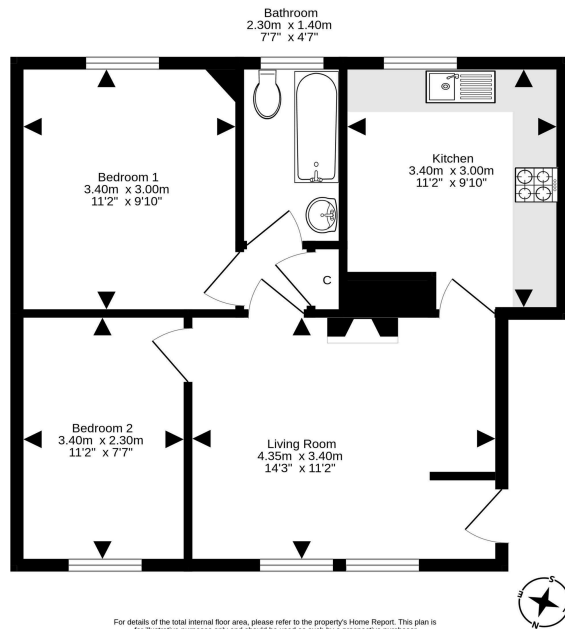




Requiring upgrading this 2-bed flat is situated within a block of 4 and offers an ideal purchase for a first-time buyer or investor. The property is well situated to take advantage of good shopping facilities with Meadowbank Retail Park close-by. Public transport, schooling and recreational facilities to include Lochend Park, Leith Links and golfing at Craiginny Golf Course.

The property opens into to a front facing living room which features twin windows, carpeted floor, an electric fire within a wooden surround and gives access to the rest of the flat. Off the living room is a rear facing kitchen which is of a good size, has base and wall units, a slot in cooker and a washing machine. There are two double bedrooms, one to the front and another to the rear. Completing the accommodation is a rear facing bathroom with partially tiled walls, WC, wash hand basin, and a bath with an electric shower unit overhead.

Additional benefits include gas central heating complimented by double glazing, unrestricted on street parking, a private garden and access to a communal rear drying area.



## EXTRAS

To include the aforementioned white goods, carpets, blinds, curtains, and garden sheds (no warranties to be given).

## OFFERS

Offers Over £120,000 are invited to be submitted to Messrs. Beveridge & Kellas, 52 Leith Walk, Edinburgh, EH6 5HW, Tel: 0131 554 6321, Fax: 0131 553 5319, DX 550850 Leith.

We have not tested the appliances, central heating or services. Prospective purchasers are advised to make their own inquiries and investigations prior to submitting an offer to purchase.

None of the statements contained in these particulars are to be relied upon as statements of fact nor do they form part of any contract.



espc