







## AN OUTDOOR RETREAT, WITH CONVENIENCE AND STYLE

...with something to suit every lifestyle

Four double bedrooms, two with en suite, plus a study/fifth bedroom make The Crichton a family home with room to grow. The four larger bedrooms feature fitted wardrobes, and all rooms have access to a luxurious family bathroom. Downstairs, the spacious entrance hall gives access to the formal lounge and a large open plan kitchen and family/dining room. A downstairs cloakroom, ample storage, utility room and integral garage cater for all practicalities.

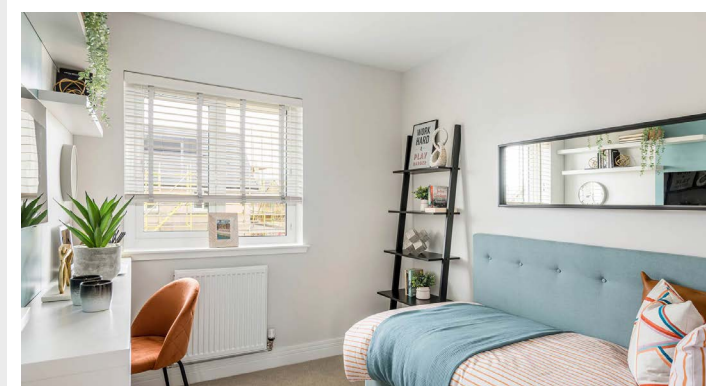


### Welcome home to The Crichton at West Craigs

This spacious 5 bedroom detached home features:

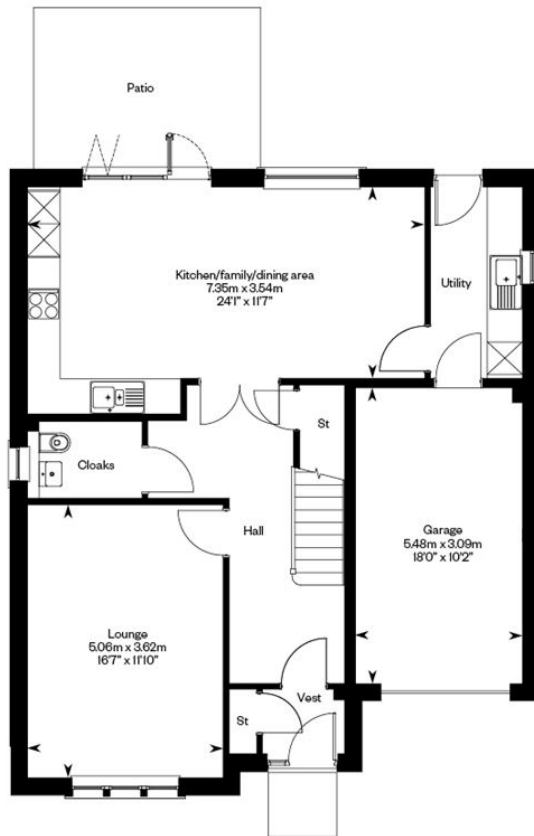
- A south east facing garden and patio
- An open plan kitchen/family/dining area with integrated appliances included
- A flexible 5th bedroom which is also perfect as a playroom, snug or study
- Excellent storage throughout
- A utility room and integrated single garage
- Overall size of 1,817 Sq. Ft.
- PEA Rating: B

[Virtual Tour: Click here to view](#)

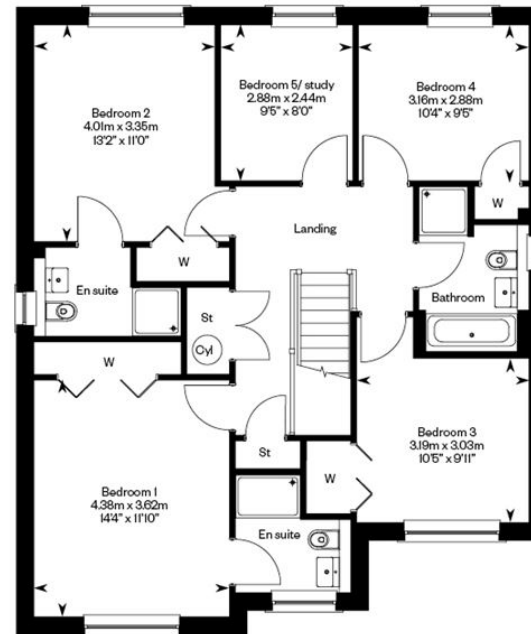




## GROUND FLOOR



## FIRST FLOOR



GILSONGRAY.CO.UK

### EDINBURGH

29 Rutland Square  
 EH1 2BW  
 0131 516 5366

...

### GLASGOW

160 West George Street  
 G2 2HQ  
 0141 530 2021

...

### EAST LoTHIAN

33 Westgate  
 EH39 4AG  
 01620 893 481

...

### DUNDEE

11 South Tay Street  
 DD1 1NU  
 01382 201 000

...

### BORDERS

01890 880 008

 @gilsongrayprop  gilson gray property  gilson gray property  @gilsongrayprop



rightmove  Zoopla.co.uk  OnTheMarket

These particulars were prepared on the basis of our own knowledge of the local area and, in respect of the property itself, information supplied to us by our clients; all reasonable steps were taken at the time of preparing these particulars to ensure that all details contained in them were accurate. All statements contained in the particulars are for information only and all parties should not rely upon them as statements or representations of fact. In particular, (a) descriptions, measurements and dimensions, which may be quoted in these particulars are approximate only and (b) all references to conditions, planning permission, services, usage, constructions, fixtures and fittings and movable items contained in the property are for guidance only. Our clients may instruct us to set a closing date for offers at short notice and therefore if you wish to pursue interest in this property, you should immediately instruct your solicitor to note interest with us. Our clients reserve the right to conclude a bargain for the sale of the above subjects or any part thereof ahead of a notified closing date and will not be obliged to accept either the highest or indeed any offer for the above subjects or any part thereof. All measurements have been taken using a sonic tape and cannot be regarded as guaranteed given the limitations of the device. Services and/or appliances referred to in these particulars have not been tested and no warranty is given that they are in full working order.