

THE GLENBERVIE

FOUR BEDROOM DETACHED HOME



Individual plots may vary, please speak to the Sales Adviser



This impressive home is designed for flexible living starting with the generous open-plan kitchen, with adjacent utility, and a bright breakfast and family area leading to the garden via a glazed walk-in bay. The separate lounge, dining room and study

provide space to relax, entertain and work. Upstairs, a generous main bedroom has a full en suite and dressing area. Three further double bedrooms, one with en suite, and a family bathroom with shower complete this spacious family home.



DAVID WILSON HOMES

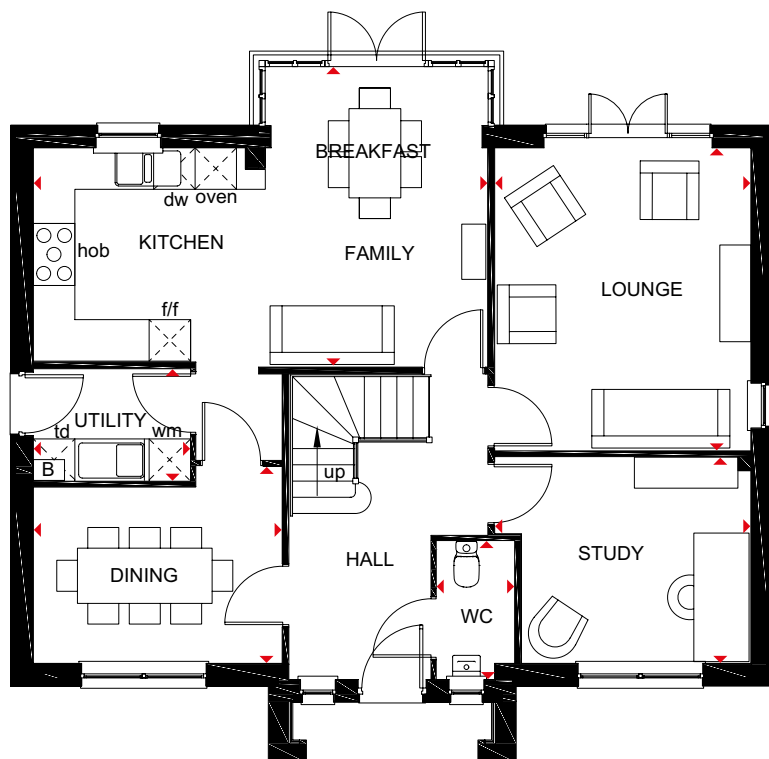
WHERE QUALITY LIVES

THE GLENBERVIE

FOUR BEDROOM DETACHED HOME

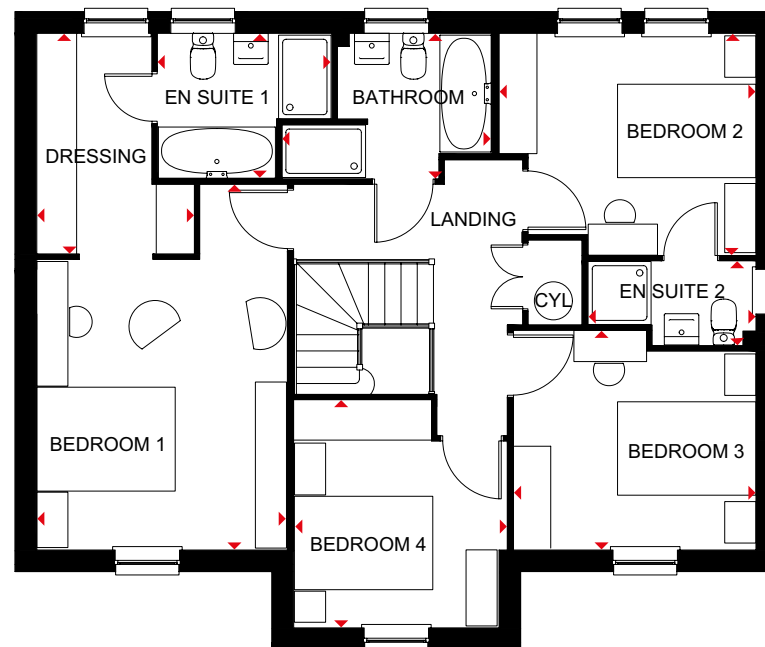
Key

B	Boiler	f/f	Fridge/freezer space	dw	Dishwasher space	◀▶	Dimension location
CYL	Cylinder	wm	Washing machine space	td	Tumble dryer space		



Ground Floor

Lounge	4377 x 3698 mm	14'4" x 12'2"
Kitchen/Family/ Breakfast	6571 x 4352 mm	21'7" x 14'3"
Utility	2264 x 1604 mm	7'5" x 5'3"
Dining	3590 x 2853 mm	11'9" x 9'4"
Study	2982 x 3698 mm	13'2" x 9'9"
WC	2001 x 1112 mm	6'7" x 3'8"



First Floor

Bedroom 1	3609 x 5274 mm	11'11" x 17'3"
Dressing	3178 x 2265 mm	10'5" x 7'5"
En Suite 1	2094 x 2503 mm	6'10" x 8'3"
Bedroom 2	3710 x 3198 mm	12'3" x 10'5"
En Suite 2	2425 x 1205 mm	7'11" x 3'11"
Bedroom 3	3491 x 3164 mm	11'6" x 10'5"
Bedroom 4	3286 x 3064 mm	10'9" x 10'1"
Bathroom	3010 x 2093 mm	9'10" x 6'10"

All images used are for illustrative purposes. These and the dimensions given are illustrative for this house type and individual properties may differ. Please check with your Sales Adviser in respect of individual properties. We give maximum dimensions within each room which includes areas of fixtures and fittings including fitted furniture. These dimensions should not be used for carpet or flooring sizes, appliance spaces or items of furniture. All images, photographs and dimensions are not intended to be relied upon for, nor to form part of, any contract unless specifically incorporated in writing into the contract.

H421 0-G2 DS00 /SP430336

