



73a Market Street, Haddington, East Lothian, EH41 3JJ

Traditional, One-Bedroom, Second-Floor (Top) Flat, with a Private Terrace

Up to date price and viewing info at mov8realestate.com/property

espc rightmove  **Zoopla**
find your happy

Property Description

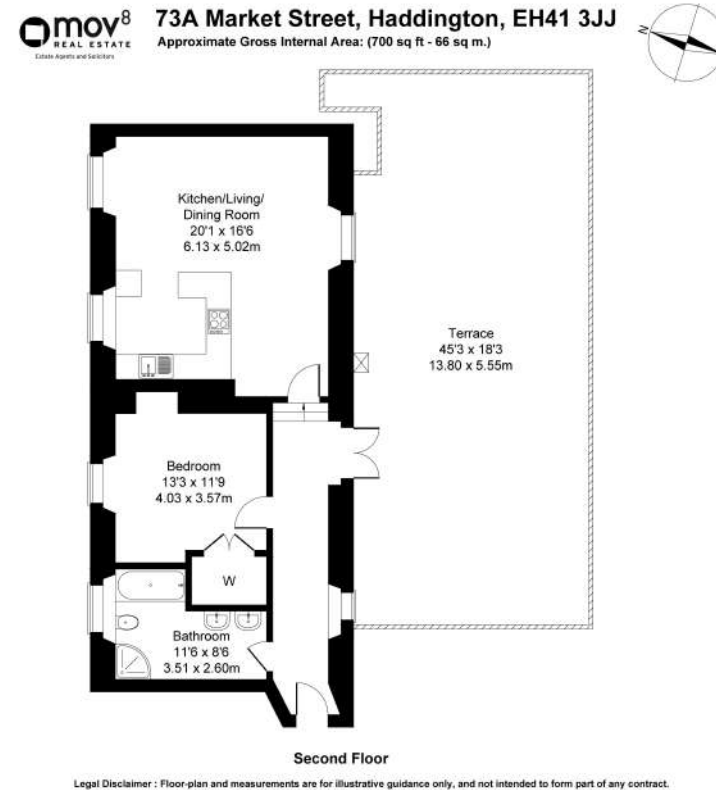
Beautifully presented and spacious, one-bedroom, second-floor (top) flat, with a private terrace. Forming part of an impressive B-listed building, located in the heart of the picturesque county town of Haddington, East Lothian.

Comprises an entrance hallway, open-plan living/dining room and kitchen, a double bedroom, and a bathroom.

Highlights include a modern fitted kitchen, a particularly generous bathroom with a separate shower cubicle, and a large private roof-top garden terrace.

In addition, there is gas central heating, sash and case windows, two loft spaces, a secured entry system, and optional permit street parking.

A bright hallway gives access throughout and features modern, wood-effect flooring and a secured entry system handset, whilst a window and French patio doors to the private terrace add superb natural light. The impressive reception room offers ample space for lounge and dining furniture, and includes carpeted flooring, tall ceilings and dual-aspect, natural light. The kitchen features stone-effect worktops, a breakfast bar, with matching upstands, a sink with a drainer, an integrated electric oven and a washing machine. A good-sized bedroom includes a built-in wardrobe, press recess, carpeted flooring and a TV point. The spacious bathroom is fitted with twin hand basins, a bath, a shower cubicle with a mains mixer, and tiled splash areas.



Area Description





Haddington is the historic county town of East Lothian, and offers an excellent range of traditional high-street and grocery-store shopping, well-regarded schooling at all levels, and a wide selection of leisure and recreational facilities. These include a modern swimming pool/leisure complex, 18-hole parkland golf course, numerous sports and social clubs, and a variety of youth organisations. There are

peaceful riverside walkways, and the town is surrounded by the rolling East Lothian countryside, with the Lammermuir Hills to the south and a fine coastline to the north, both easily accessible. Located just off the A1, the property lies in a convenient location for easy commuting to Edinburgh, the Borders and Northumberland.





Our Services

-  Free pre-sale property valuations
-  Great value fixed estate agency fees
-  Extensive buyer matching database
-  Purchase and sale conveyancing

Contact Us

0345 646 0208

sales@mov8realestate.com

www.mov8.com

Head Office

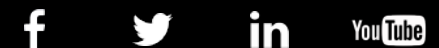
6 Redheughs Rigg, Edinburgh, EH12 9DQ

Glasgow Office

77 Renfrew Street, Glasgow, G2 3BZ



Estate Agents and Solicitors



These particulars do not form part of any contract and the statements or plans contained herein are not warranted nor are they to scale. All descriptions, dimensions, areas, reference to condition and necessary permissions for use and occupation and other details are given in good faith, and are believed to be correct, but any prospective purchaser should not rely on them as statements or representations of fact, and any prospective purchaser must satisfy themselves by inspection or otherwise as to the correctness of each of them. The Seller shall not be bound to accept the highest or any offer nor to accept a full offer of the Fixed Price where this is applicable. Approximate measurements have been taken by sonic device and measurements are most often taken to the widest point of any room or space. Services and appliances have not been tested for efficiency or safety and no warranty is given as to their compliance with any Regulations. Offers should be made using the Combined Standard Clauses.