





ENJOY THE BEST OF BOTH WORLDS AT CAMMO MEADOWS

Welcome home to The Melrose at Cammo Meadows

At the heart of this remarkable, five-bedroom family home is an open plan kitchen and family/dining area with kitchen island. This flexible living space is further extended via bi-folding doors to the patio area and rear garden. A separate formal lounge also has direct access to the rear garden, providing the perfect space to entertain or to relax away from the hustle and bustle of the family area. The ground floor also features an integral garage, cloakroom, storage space and separate study. Upstairs, the Melrose boasts a stunning galleried landing where ample storage space can also be found. The luxurious main bedroom features an en suite bath and shower room. Three of the remaining four bedrooms benefit from fitted wardrobes, and one has an en suite shower room



5 Bedroom Detached Home

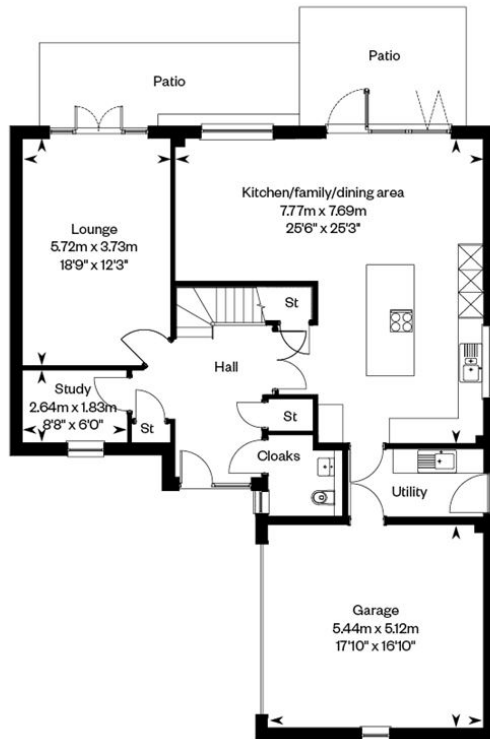
The Melrose at Cammo Meadows includes:

- A spacious rear garden and patio
- An impressive open plan kitchen/family/dining area - perfect for entertaining
- A kitchen island plus integrated appliances as standard
- A separate light-filled lounge to the rear leading onto spacious patio area
- 4 double bedrooms and en-suites to bedrooms 1 and 2
- A flexible fifth bedroom
- A separate study on the ground floor
- A separate utility room plus integrated garage
- Overall size of 2,497 sq. ft.

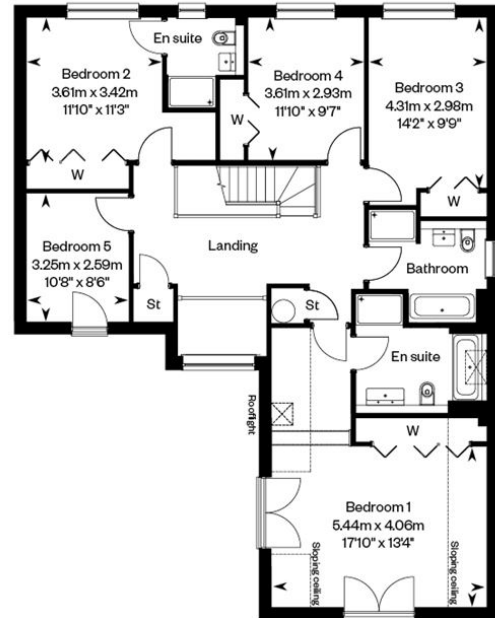
Virtual Tour: [Take a look around](#)



GROUND FLOOR



Ground floor



First floor

GILSONGRAY.CO.UK

EDINBURGH

29 Rutland Square
EH1 2BW
0131 516 5366

...

GLASGOW

160 West George Street
G2 2HQ
0141 530 2021

...

EAST LoTHIAN

33 Westgate
EH39 4AG
01620 893 481

...

DUNDEE

11 South Tay Street
DD1 1NU
01382 201 000

...

BORDERS

01890 880 008



@gilsongrayprop



gilson gray property



gilson gray property



@gilsongrayprop



CHARTERED FIRM

rightmove

Zopla.co.uk

OnTheMarket