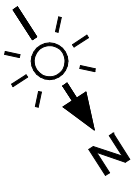


**Balcarres Street,
Edinburgh, EH10 5JB**



Approx. Gross Internal Area

580 Sq Ft - 53.88 Sq M

Sleeping Platform

Approx. Gross Internal Area

26 Sq Ft - 2.42 Sq M

Store

Approx. Gross Internal Area

19 Sq Ft - 1.77 Sq M

For identification only. Not to scale.

© SquareFoot 2024

