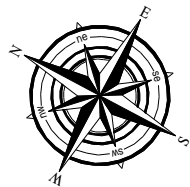
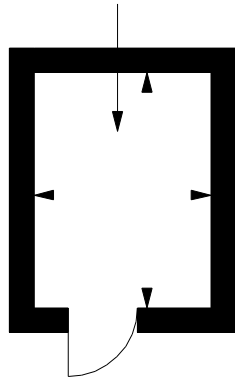


Shed

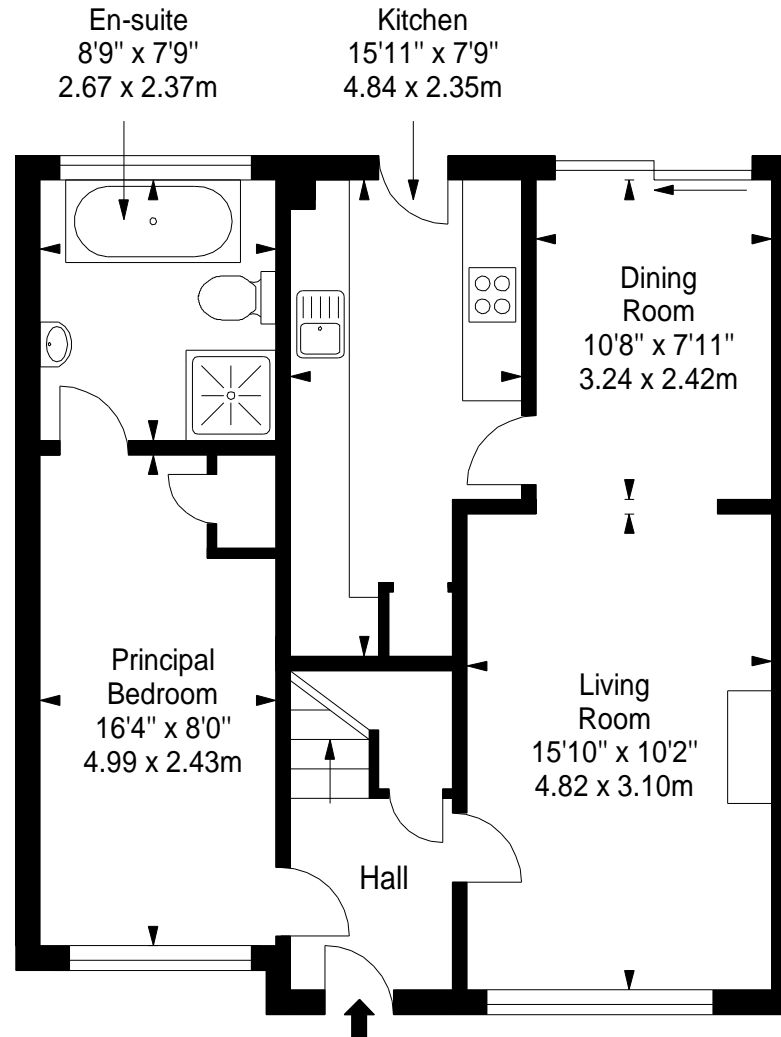
Approx. 4.3 sq. metres (46.3 sq. feet)

Shed
5'11" x 7'10"
1.80 x 2.40m



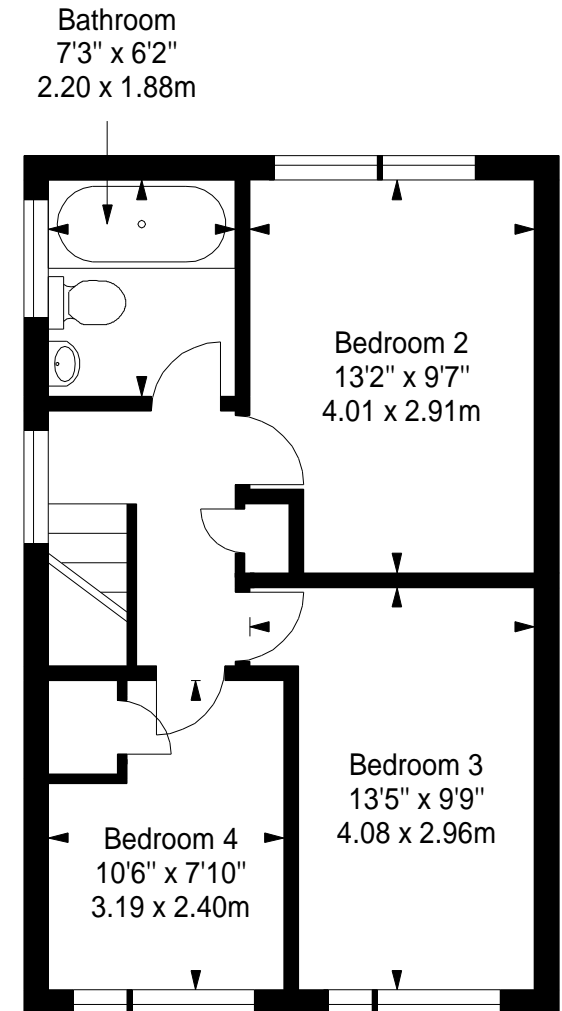
Ground Floor

Approx. 60.3 sq. metres (649.1 sq. feet)



First Floor

Approx. 40.8 sq. metres (439.2 sq. feet)



Total area: approx. 105.4 sq. metres (1134.6 sq. feet)