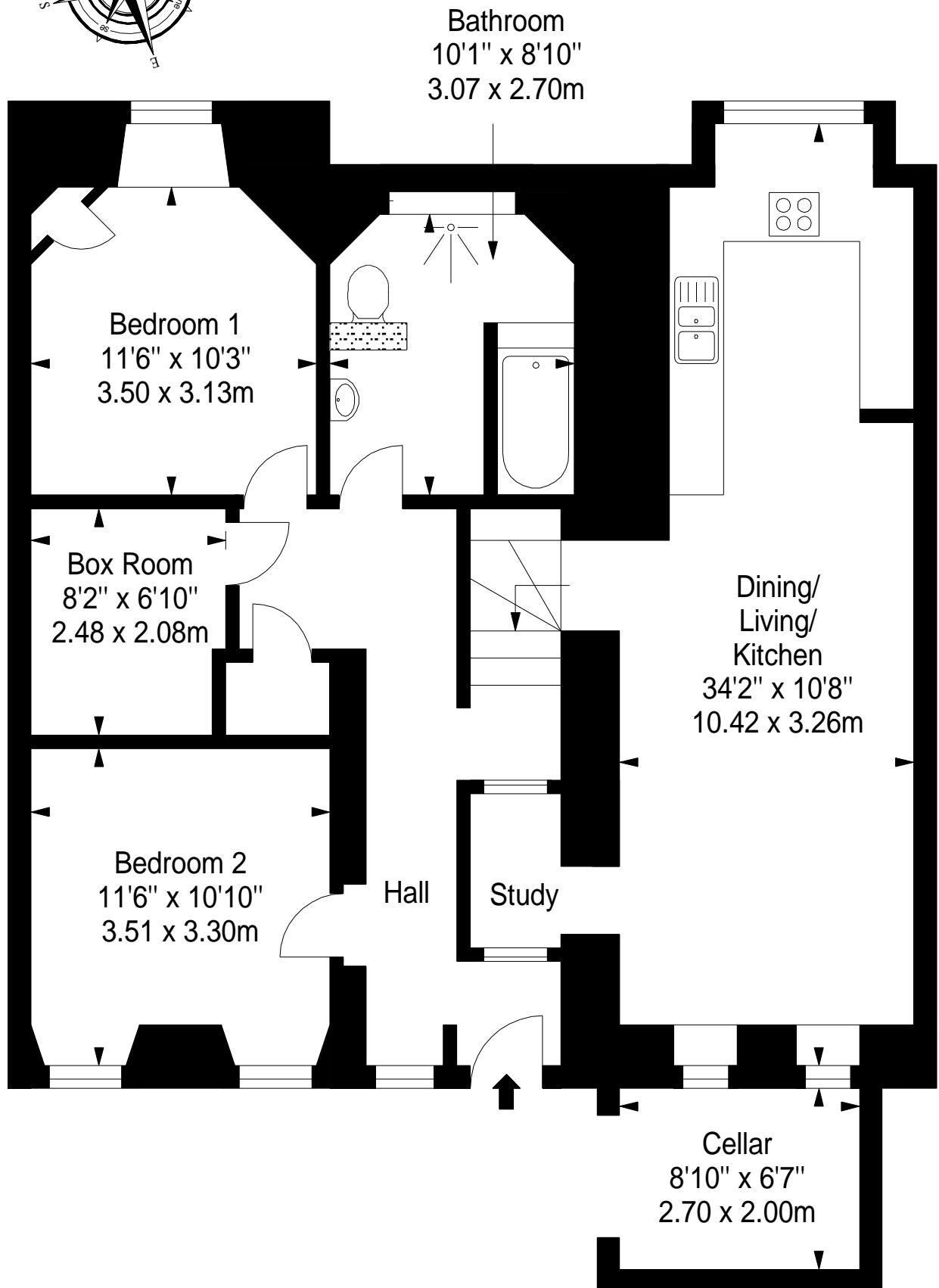
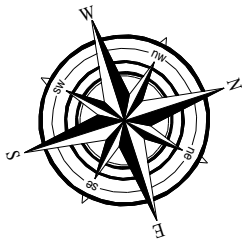


## Lower Ground Floor

Approx. 90.8 sq. metres (977.4 sq. feet)

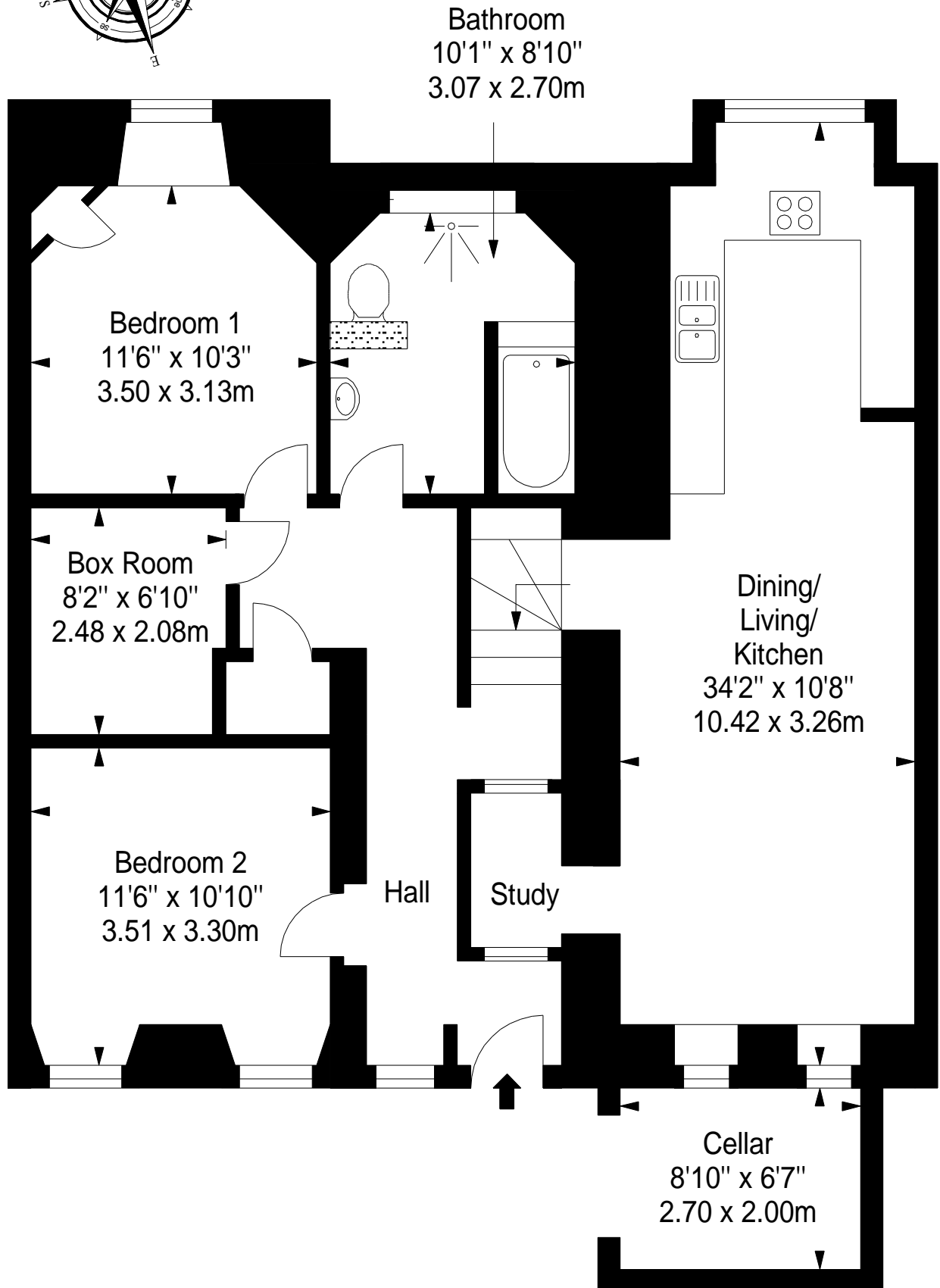


Total area: approx. 90.8 sq. metres (977.4 sq. feet)



## Lower Ground Floor

Approx. 90.8 sq. metres (977.4 sq. feet)



Total area: approx. 90.8 sq. metres (977.4 sq. feet)